



UNIVERSITY OF CAMBRIDGE INTERNATIONAL EXAMINATIONS  
General Certificate of Education Ordinary Level

CANDIDATE  
NAME

CENTRE  
NUMBER

--	--	--	--	--

CANDIDATE  
NUMBER

--	--	--	--



**ADDITIONAL MATHEMATICS**

**4037/21**

Paper 2

**May/June 2011**

**2 hours**

Candidates answer on the Question Paper.

No Additional Materials are required.

**READ THESE INSTRUCTIONS FIRST**

Write your Centre number, candidate number and name on all the work you hand in.

Write in dark blue or black pen.

You may use a pencil for any diagrams or graphs.

Do not use staples, paper clips, highlighters, glue or correction fluid.

**DO NOT WRITE IN ANY BARCODES.**

Answer **all** the questions.

Give non-exact numerical answers correct to 3 significant figures, or 1 decimal place in the case of angles in degrees, unless a different level of accuracy is specified in the question.

The use of an electronic calculator is expected, where appropriate.

You are reminded of the need for clear presentation in your answers.

At the end of the examination, fasten all your work securely together.

The number of marks is given in brackets [ ] at the end of each question or part question.

The total number of marks for this paper is 80.

For Examiner's Use	
1	
2	
3	
4	
5	
6	
7	
8	
9	
10	
11	
<b>Total</b>	

This document consists of **14** printed pages and **2** blank pages.



**Mathematical Formulae****1. ALGEBRA***Quadratic Equation*

For the equation  $ax^2 + bx + c = 0$ ,

$$x = \frac{-b \pm \sqrt{b^2 - 4ac}}{2a}.$$

*Binomial Theorem*

$$(a + b)^n = a^n + \binom{n}{1} a^{n-1} b + \binom{n}{2} a^{n-2} b^2 + \dots + \binom{n}{r} a^{n-r} b^r + \dots + b^n,$$

where  $n$  is a positive integer and  $\binom{n}{r} = \frac{n!}{(n-r)!r!}$ .

**2. TRIGONOMETRY***Identities*

$$\sin^2 A + \cos^2 A = 1$$

$$\sec^2 A = 1 + \tan^2 A$$

$$\operatorname{cosec}^2 A = 1 + \cot^2 A$$

*Formulae for  $\Delta ABC$* 

$$\frac{a}{\sin A} = \frac{b}{\sin B} = \frac{c}{\sin C}$$

$$a^2 = b^2 + c^2 - 2bc \cos A$$

$$\Delta = \frac{1}{2} bc \sin A$$

- 1 Without using a calculator, express  $\frac{(5 + 2\sqrt{3})^2}{2 + \sqrt{3}}$  in the form  $p + q\sqrt{3}$ , where  $p$  and  $q$  are integers. [4]

For  
Examiner's  
Use

- 
- 2 (i) Find the coefficient of  $x^3$  in the expansion of  $\left(1 - \frac{x}{2}\right)^{12}$ . [2]

- (ii) Find the coefficient of  $x^3$  in the expansion of  $(1 + 4x)\left(1 - \frac{x}{2}\right)^{12}$ . [3]

- 3 Relative to an origin  $O$ , the position vectors of the points  $A$  and  $B$  are  $\mathbf{i} - 4\mathbf{j}$  and  $7\mathbf{i} + 20\mathbf{j}$  respectively. The point  $C$  lies on  $AB$  and is such that  $\vec{AC} = \frac{2}{3}\vec{AB}$ . Find the position vector of  $C$  and the magnitude of this vector. [5]

For  
Examiner's  
Use

- 4 Find the set of values of  $k$  for which the line  $y = 2x - 5$  cuts the curve  $y = x^2 + kx + 11$  in two distinct points. [6]

*For  
Examiner's  
Use*

5 The expression  $x^3 + 8x^2 + px - 25$  leaves a remainder of  $R$  when divided by  $x - 1$  and a remainder of  $-R$  when divided by  $x + 2$ .

*For  
Examiner's  
Use*

(i) Find the value of  $p$ . [4]

(ii) Hence find the remainder when the expression is divided by  $x + 3$ . [2]

6 (a) A shelf contains 8 different travel books, of which 5 are about Europe and 3 are about Africa.

(i) Find the number of different ways the books can be arranged if there are no restrictions. [2]

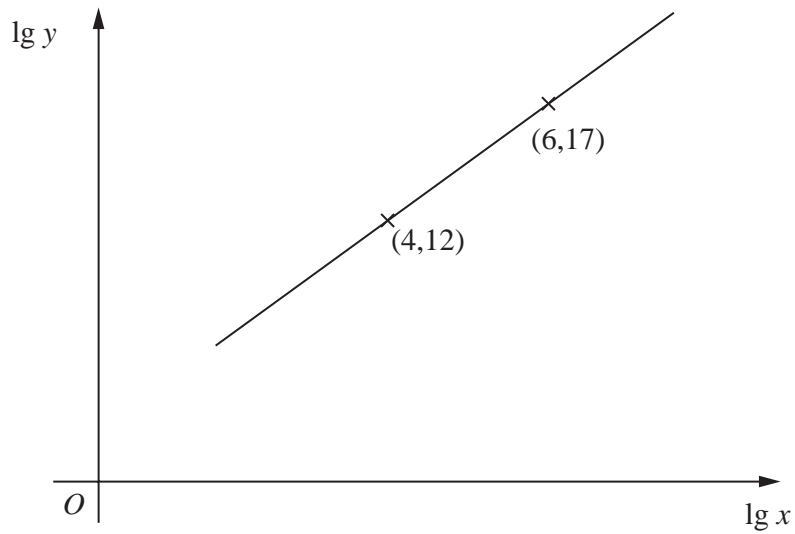
(ii) Find the number of different ways the books can be arranged if the 5 books about Europe are kept together. [2]

(b) 3 DVDs and 2 videotapes are to be selected from a collection of 7 DVDs and 5 videotapes.

Calculate the number of different selections that could be made. [3]

- 7 The variables  $x$  and  $y$  are related so that when  $\lg y$  is plotted against  $\lg x$  a straight line graph passing through the points  $(4, 12)$  and  $(6, 17)$  is obtained.

For  
Examiner's  
Use



- (i) Express  $y$  in terms of  $x$ , giving your answer in the form  $y = ax^b$ . [6]

- (ii) Find the value of  $x$  when  $y = 300$ . [2]



- 8 The temperature,  $T^\circ$  Celsius, of an object,  $t$  minutes after it is removed from a heat source, is given by

$$T = 55e^{-0.1t} + 15.$$

- (i) Find the temperature of the object at the instant it is removed from the heat source. [1]
- (ii) Find the temperature of the object when  $t = 8$ . [1]
- (iii) Find the value of  $t$  when  $T = 25$ . [3]
- (iv) Find the rate of change of  $T$  when  $t = 16$ . [3]

For  
Examiner's  
Use

- 9 A coastguard station receives a distress call from a ship which is travelling at  $15 \text{ km h}^{-1}$  on a bearing of  $150^\circ$ . A lifeboat leaves the coastguard station at 15 00 hours; at this time the ship is at a distance of 30 km on a bearing of  $270^\circ$ . The lifeboat travels in a straight line at constant speed and reaches the ship at 15 40 hours.

*For  
Examiner's  
Use*

(i) Find the speed of the lifeboat. [5]

(ii) Find the bearing on which the lifeboat travelled. [3]

10 (i) Solve the equation  $3 \sin x + 4 \cos x = 0$  for  $0^\circ < x < 360^\circ$ . [3]

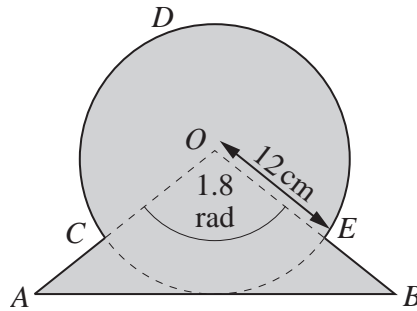
*For  
Examiner's  
Use*

(ii) Solve the equation  $6 \cos y + 6 \sec y = 13$  for  $0^\circ < y < 360^\circ$ . [5]

(iii) Solve the equation  $\sin(2z - 3) = 0.7$  for  $0 < z < \pi$  radians. [3]

11 Answer only **one** of the following two alternatives.

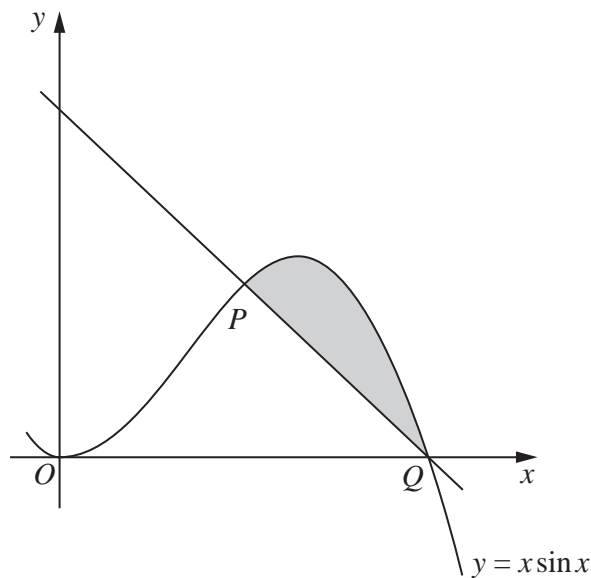
**EITHER**



The diagram shows an isosceles triangle  $AOB$  and a sector  $OCDEO$  of a circle with centre  $O$ . The line  $AB$  is a tangent to the circle. Angle  $AOB = 1.8$  radians and the radius of the circle is 12 cm.

- (i) Show that the distance  $AC = 7.3$  cm to 1 decimal place. [2]
- (ii) Find the perimeter of the shaded region. [6]
- (iii) Find the area of the shaded region. [4]

**OR**



The diagram shows part of the curve  $y = x \sin x$  and the normal to the curve at the point  $P\left(\frac{\pi}{2}, \frac{\pi}{2}\right)$ . The curve passes through the point  $Q(\pi, 0)$ .

- (i) Show that the normal to the curve at  $P$  passes through the point  $Q$ . [4]
- (ii) Given that  $\frac{d}{dx}(x \cos x) = \cos x - x \sin x$ , find  $\int x \sin x dx$ . [3]
- (iii) Find the area of the shaded region. [5]







**BLANK PAGE**

---

Permission to reproduce items where third-party owned material protected by copyright is included has been sought and cleared where possible. Every reasonable effort has been made by the publisher (UCLES) to trace copyright holders, but if any items requiring clearance have unwittingly been included, the publisher will be pleased to make amends at the earliest possible opportunity.

University of Cambridge International Examinations is part of the Cambridge Assessment Group. Cambridge Assessment is the brand name of University of Cambridge Local Examinations Syndicate (UCLES), which is itself a department of the University of Cambridge.