

CANDIDATE
NAME

--

CENTRE
NUMBER

--	--	--	--	--

CANDIDATE
NUMBER

--	--	--	--



PAKISTAN STUDIES

2059/02

Paper 2 The Environment of Pakistan

May/June 2014

1 hour 30 minutes

Candidates answer on the Question Paper.

READ THESE INSTRUCTIONS FIRST

Write your name, Centre number and candidate number in the spaces provided.

Write in dark blue or black pen.

Do not use staples, paper clips, highlighters, glue or correction fluid.

DO NOT WRITE IN ANY BARCODES.

Answer any **three** questions.

The Insert contains Fig. 6 for Question 3 and Photographs A and B for Question 5.

The Insert is **not** required by the Examiner.

The number of marks is given in brackets [] at the end of each question or part question.

This document consists of **18** printed pages, **2** blank pages and **1** insert.

1 (a) Study Fig. 1, a graph showing wheat production and cultivation.

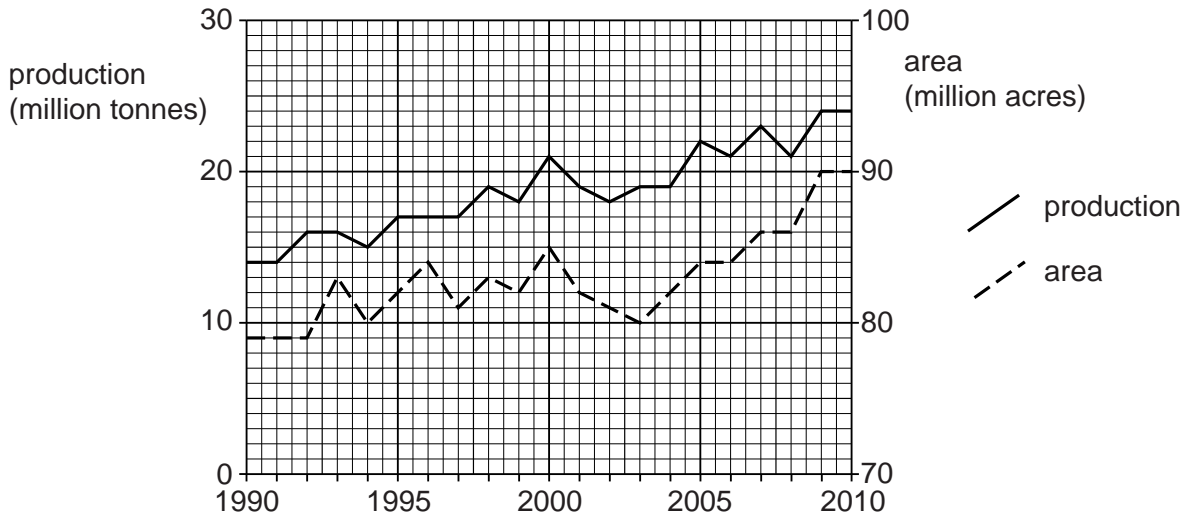


Fig. 1

(i) By how much did wheat production increase from 1991 to 2010?

..... [1]

(ii) By how much did the area of wheat cultivation increase from 1991 to 2010?

..... [1]

(iii) Compare the production of wheat from 1991 to 2000 with the production from 2001 to 2010.

.....

 [2]

(iv) To what extent was the amount of wheat produced related to the cultivated area from 1991 to 2010?

.....

 [3]

(b) (i) Circle the months in which most wheat is grown in Pakistan.

OCTOBER – MAY

JUNE – SEPTEMBER

[1]

(ii) Explain why the climate at this time is most suitable for wheat farming.

.....
.....
.....
.....
.....
.....
.....[3]

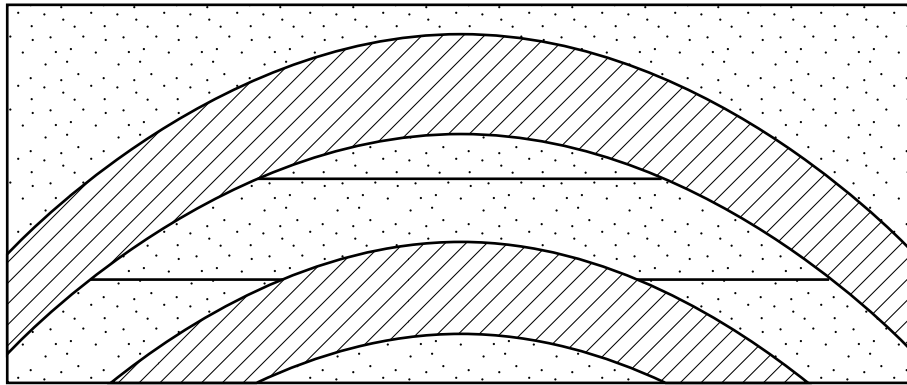
(c) Why are waterlogging and salinity called ‘the twin menaces for farmers’?

.....
.....
.....
.....[2]

(d) Describe the ways in which damage by waterlogging and salinity can be prevented.

.....
.....
.....
.....
.....
.....
.....
.....
.....
.....
.....
.....
.....
.....
.....
.....
.....
.....
.....
.....
.....
.....[6]

2 (a) Study Fig. 2, a cross section showing an oil trap.





Key:  porous rock
 non-porous rock

Fig. 2

(i) Label on the diagram

- A the layer of rock containing oil.
- B the layer of rock containing gas.

[2]

(ii) What is meant by the term 'porous rock'?

.....
.....[1]

(iii) Why is the feature in Fig. 2 called 'an oil trap'?

.....
.....
.....
.....[2]

(b) Study Fig. 3 which shows the uses of oil.

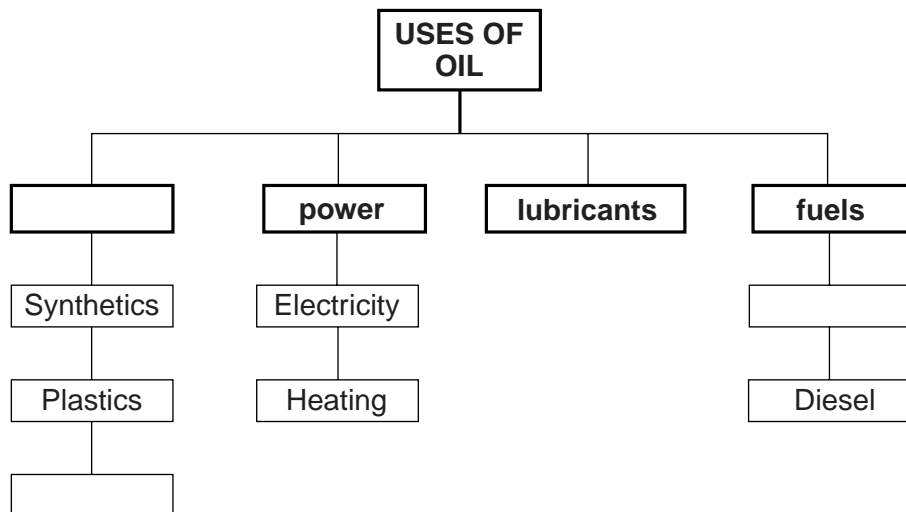


Fig. 3

Choose **three** of the following terms below to complete Fig. 3.

by-products

raw materials

pesticide

petrol

biogas

bagasse

[3]

(c) Study Fig. 4, a map showing oil refineries and pipelines in Pakistan.

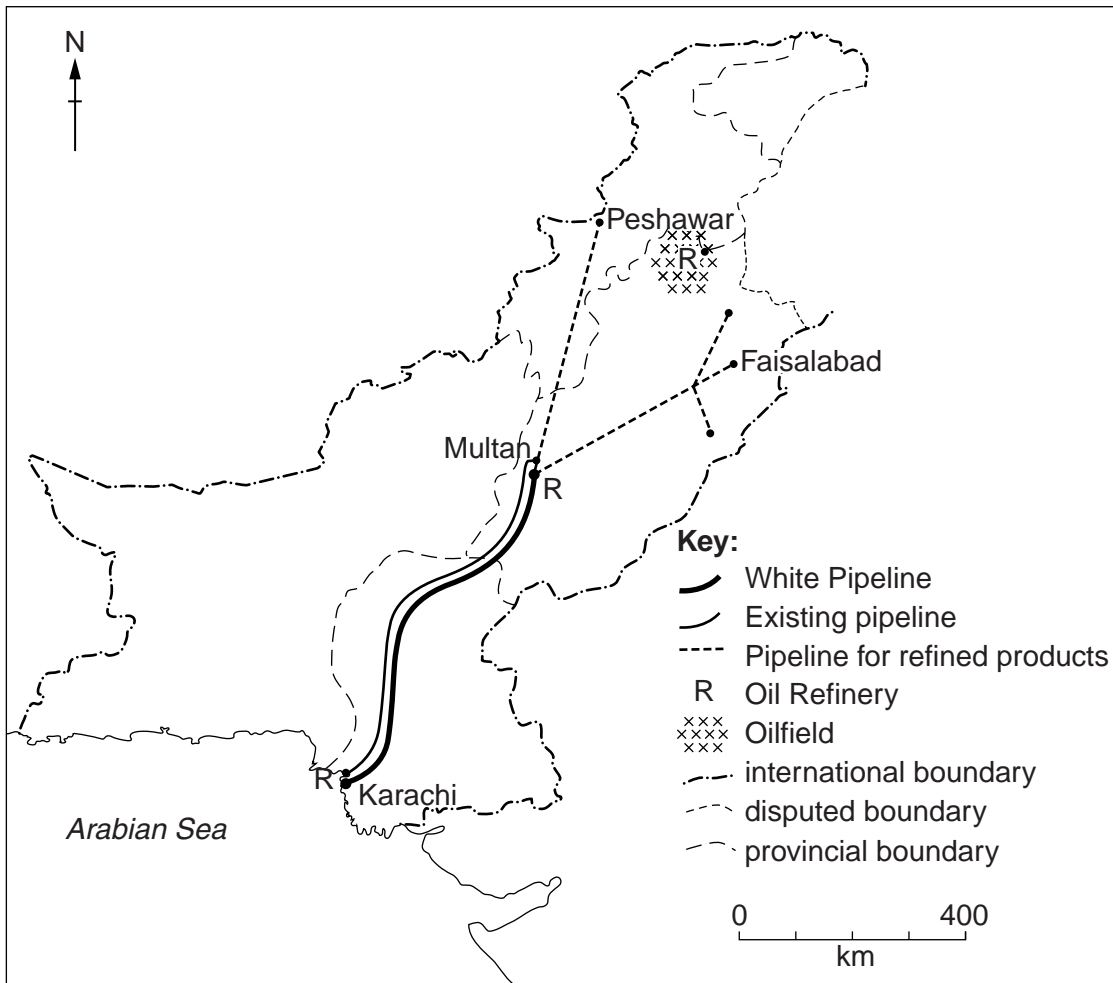


Fig. 4

(i) Name and locate the oil refinery marked on the oilfield in Fig. 4.

Name Location[2]

(ii) Name **one** refinery where imported oil is processed.

.....[1]

3 (a) Study the map Fig. 5.

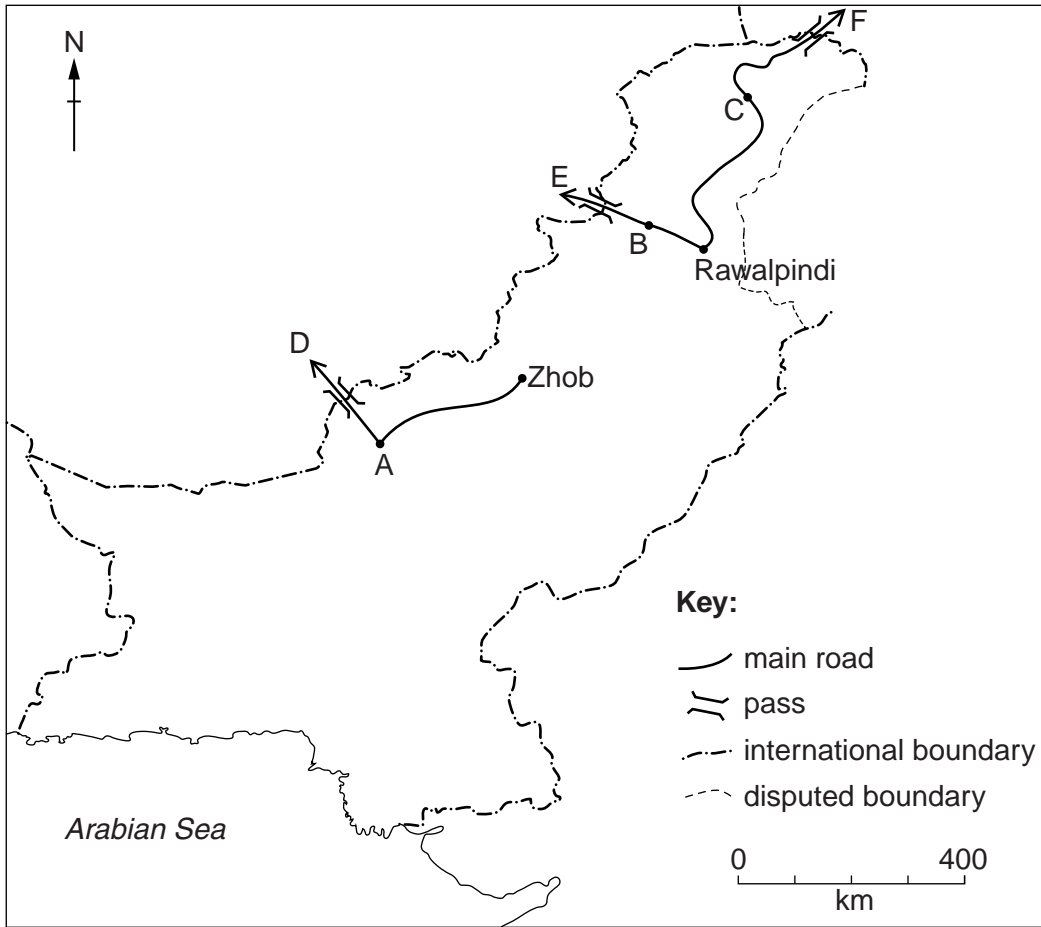


Fig. 5

(i) Name the towns A, B and C.

A B

C [3]

(ii) Name **one** of the passes D, E and F shown on Fig. 5, and name the country that it links to Pakistan.

Letter Name Country [2]

(iii) Give **two** reasons why air transport is used to carry lightweight or valuable goods to other countries instead of roads.

1

2

[2]

(b) Study Fig. 6 (Insert) an advertisement for cotton fabric.

(i) State **three** ways in which this company can be contacted.

- 1
- 2
- 3 [3]

(ii) Explain the importance of good communications to a business such as Cotton Fabrics International.

.....

.....

.....

.....

.....

..... [3]

(c) (i) Name **two** dry ports in Pakistan.

- 1 2 [2]

(ii) Explain how dry ports have increased trade in Pakistan.

.....

.....

.....

.....

.....

.....

.....

..... [4]

4 (a) Study Fig. 7, a map of deforestation in Pakistan.

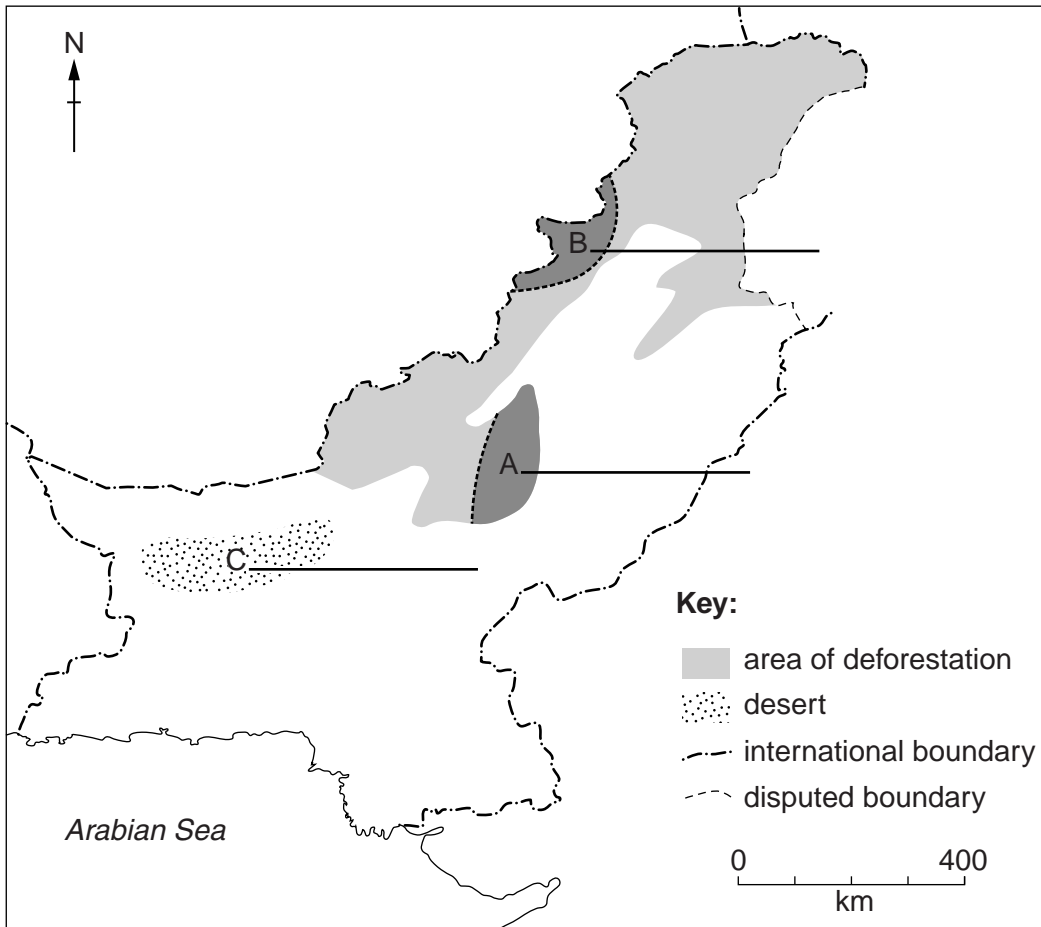


Fig. 7

- (i) Name the areas of deforestation A and B. [2]
- (ii) Name the desert C. [1]
- (iii) State **three** reasons why deforestation occurs in one of the areas shown on Fig. 7. [3]
 - 1
 - 2
 - 3 [3]

(b) Study the article below from 'Dawn', November 4th, 2011.

Pakistan has the highest annual deforestation rate in Asia. The forests only cover 2.5% of the country's land. At the time of independence they covered 33%. If deforestation is not more strictly controlled, the country will not be able to meet its commitment under the UN Development Goal. This goal is to increase its forest cover to 6% by 2015.

(i) By how much has forest cover decreased since independence?

.....[1]

(ii) By how much should it increase by 2015 to meet its commitment under the UN Development Goal?

.....[1]

(c) State and explain **three** effects of deforestation in mountainous areas.

Effect

Explanation

.....

Effect

Explanation

.....

Effect

Explanation

.....

[6]

5 (a) Study Fig. 8 showing the United Nations figures for the different age groups in Pakistan.

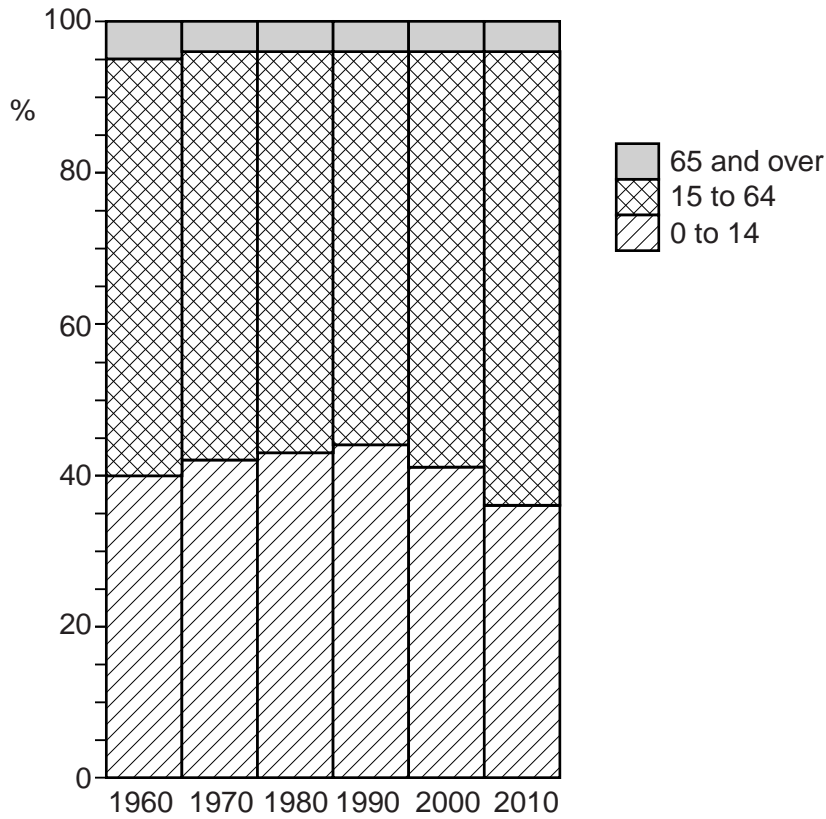


Fig. 8

(i) What was the percentage of the age group 0–14 years in 2010?

.....

[1]

(ii) Which age group of the population decreased in percentage from 1990 to 2010?

.....

[1]

(iii) How has the percentage of working population (aged 15 to 64) changed from 1980 to 2010?

..... [1]

(b) (i) What is meant by 'seasonal migration'?

.....
.....
.....
.....[2]

(ii) Name and describe an example of seasonal migration.

Example

Description

.....
.....
.....
.....
.....
.....
.....
.....
.....[4]

BLANK PAGE

Permission to reproduce items where third-party owned material protected by copyright is included has been sought and cleared where possible. Every reasonable effort has been made by the publisher (UCLES) to trace copyright holders, but if any items requiring clearance have unwittingly been included, the publisher will be pleased to make amends at the earliest possible opportunity.

Cambridge International Examinations is part of the Cambridge Assessment Group. Cambridge Assessment is the brand name of University of Cambridge Local Examinations Syndicate (UCLES), which is itself a department of the University of Cambridge.