



UNIVERSITY OF CAMBRIDGE INTERNATIONAL EXAMINATIONS  
International General Certificate of Secondary Education

---

**GEOGRAPHY**

**0460/22**

Paper 2

**October/November 2010**

INSERT

**1 hour 30 minutes**

---

**READ THESE INSTRUCTIONS FIRST**

This Insert contains Photographs A and B for Question 3 and Fig. 6 for Question 4.

---

This document consists of 4 printed pages.



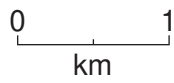
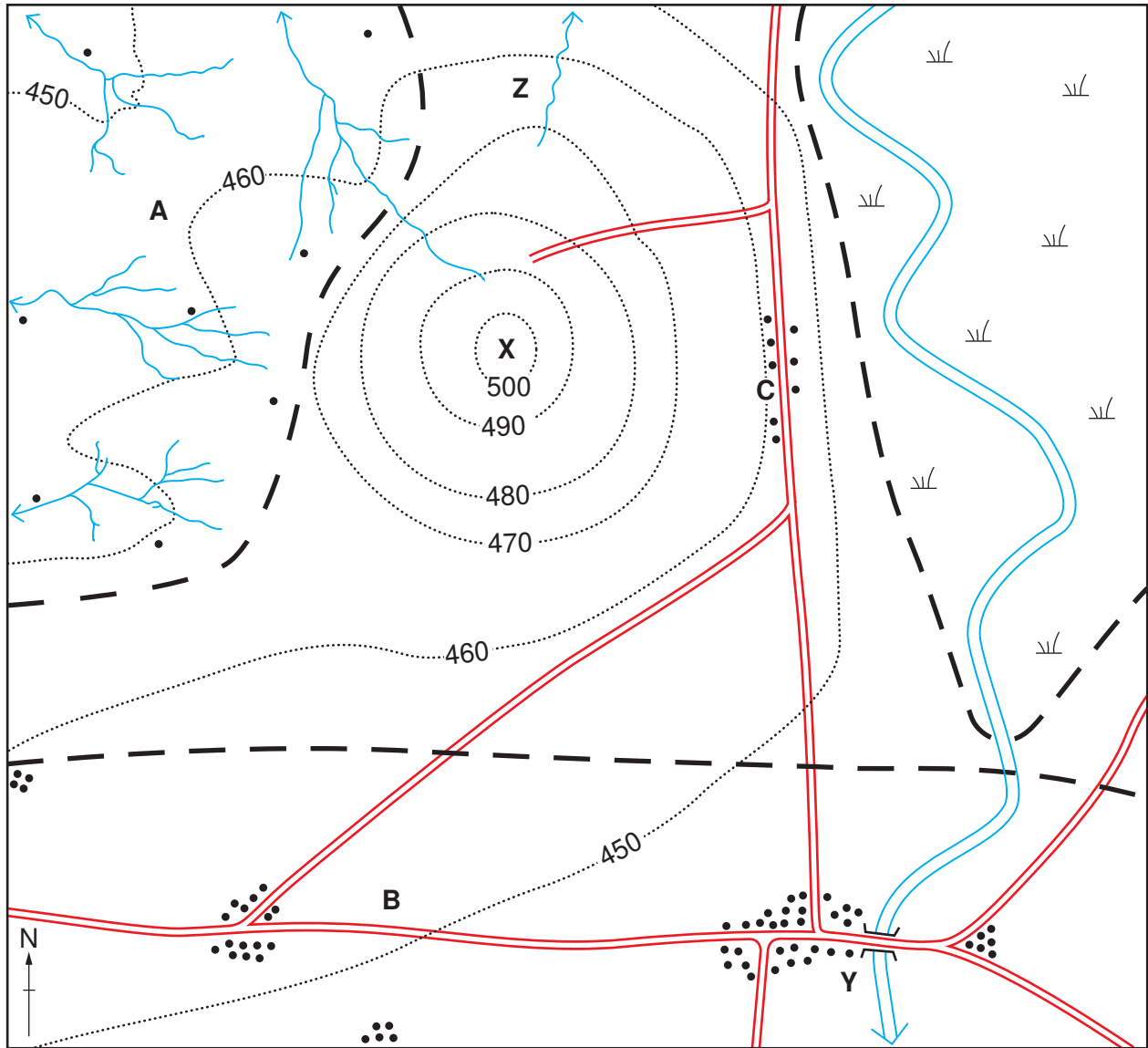
Photograph A for Question 3



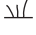






Photograph B for Question 3



Fig. 6 for Question 4



- Key**
-  river
  -  stream
  -  marsh
  -  road with bridge
  -  building
  -  boundaries of areas A, B and marsh
  -  470 contour with height in metres