



UNIVERSITY OF CAMBRIDGE INTERNATIONAL EXAMINATIONS  
International General Certificate of Secondary Education

www.XtremePapers.com

---

**GEOGRAPHY**

**0460/41**

Paper 4 Alternative to Coursework

**October/November 2011**

INSERT

**1 hour 30 minutes**

---

**READ THESE INSTRUCTIONS FIRST**

This Insert contains Figs 1 and 2 for Question 1 and Figs 6, 7 and 8 for Question 2.

The Insert is **not** required by the Examiner.

---

This document consists of **5** printed pages and **3** blank pages.



## Fig. 1 for Question 1

## Sphere of Influence Questionnaire Version 1

As part of my Geography coursework I am doing an investigation into the sphere of influence of the school. Please will you answer the following questions?

1. Are you a student at the school?

Yes

No

2. Where do you live? .....

3. Do you come to school by car?

Yes

No

Thank you for your time.

## Fig. 2 for Question 1

## Sphere of Influence Questionnaire Version 2

As part of my Geography coursework I am doing an investigation into the sphere of influence of the school. Please will you answer the following questions?

1. In which municipality (district) of Beijing do you live? Please tick below.

Municipality	Tick ✓
Xi Cheng	
Dong Cheng	
Chong Wen	
Xuan Wu	
Hai Dian	
Feng Tai	
Chao Yang	
Chang Ping	
Shung Yi	
Tong Zhou	
Da Xing	
Ping Gu	
Fang Shan	
Men Tou Go	

2. How do you usually travel to school? .....

Thank you for your time.

Fig. 6 for Question 2

Anemometer

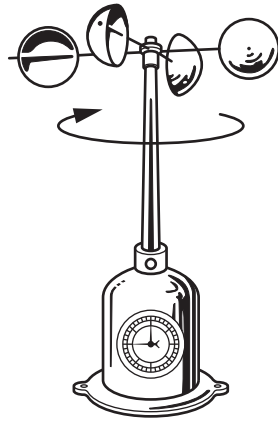


Fig. 7 for Question 2

Wind vane

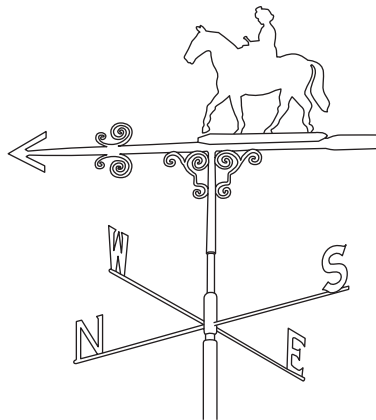
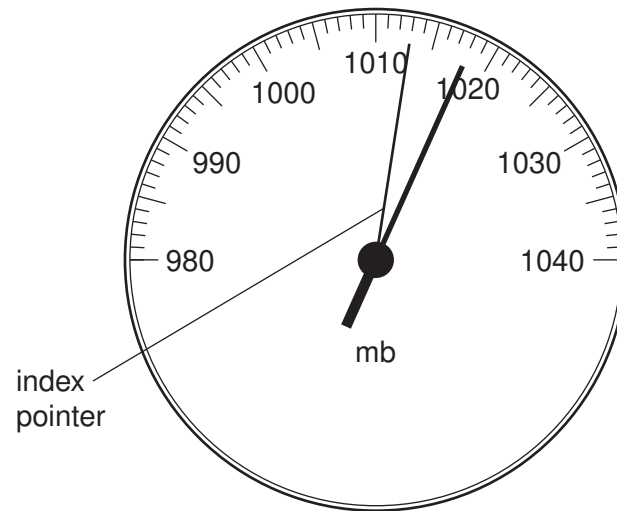


Fig. 8 for Question 2

Barometer (showing the atmospheric pressure at 12.00 hours on Day 1)







**BLANK PAGE**

---

Permission to reproduce items where third-party owned material protected by copyright is included has been sought and cleared where possible. Every reasonable effort has been made by the publisher (UCLES) to trace copyright holders, but if any items requiring clearance have unwittingly been included, the publisher will be pleased to make amends at the earliest possible opportunity.

University of Cambridge International Examinations is part of the Cambridge Assessment Group. Cambridge Assessment is the brand name of University of Cambridge Local Examinations Syndicate (UCLES), which is itself a department of the University of Cambridge.